

Door Armrest Installation

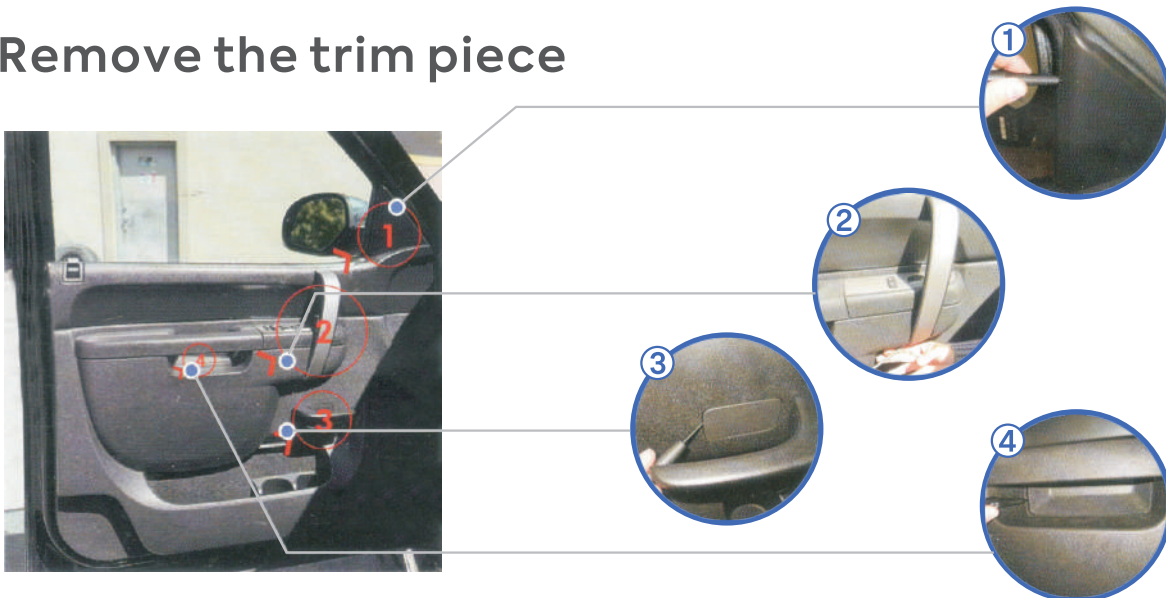
VALTECS

- Flat blade screwdriver
- 10 mm socket and ratchet with an extension
- Needle-nose pliers
- 7/32" drill bit OR Grinder
- Marker

STEP 1

remove the door panel

Remove the trim piece



Use a pry bar or flat-head screwdriver to remove the four trim panels

STEP 2

remove the door panel



Remove the door mounting screws

1. Remove the five 10 mm bolts marked 1-5 in the diagram
2. Remove the grab handles labeled 1 and 2

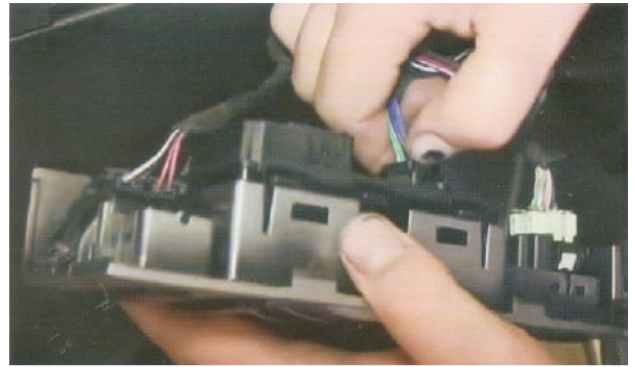
STEP3

remove the door panel

Remove the switch panel



1. Use a flat-head pry bar to remove the window switch panel



2. Disconnect the wiring harness from the switch panel and remove the switch

STEP4

remove the door panel



Remove the door locking rod

- ① Open the upper left door lock
- ② Pry open the small center cover
- ③ Remove the front side door locking rod



STEP5

remove the door panel

Remove the door panel



1. Pry around the edges to release and remove the door panel



2. Position the door vertically to make it easier to disconnect the door lock linkage cable



3. Unhook the door lock linkage cable

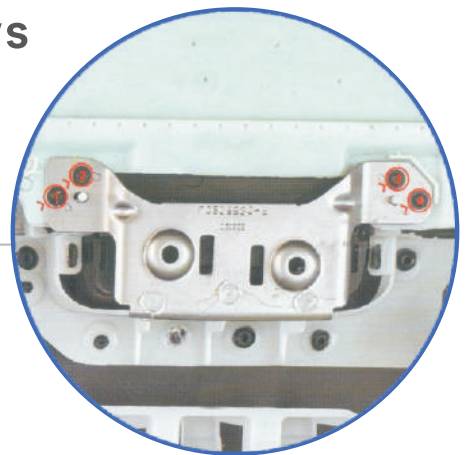
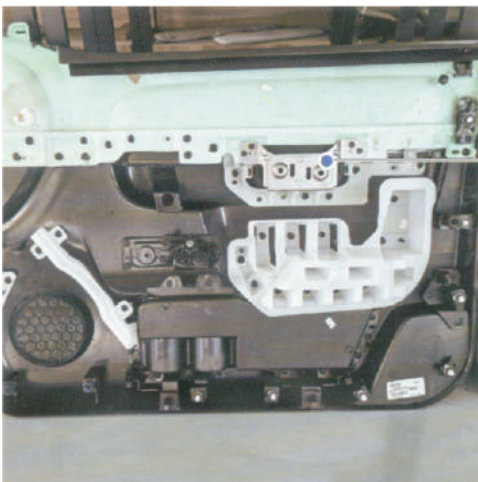


4. Remove the moisture barrier carefully for reuse

STEP6

remove the door panel

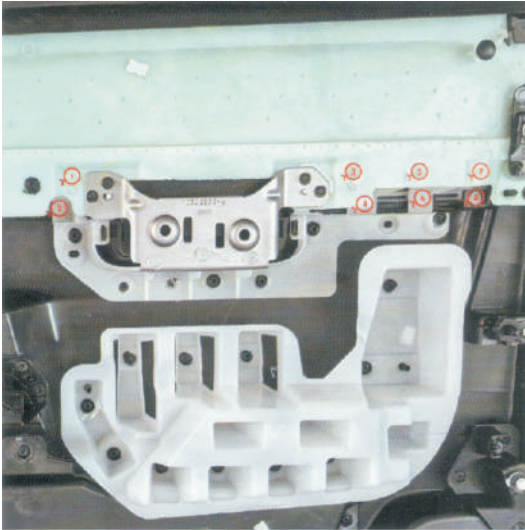
Remove the large mounting screws



Remove the four black mounting screws
Keep the screws for reuse

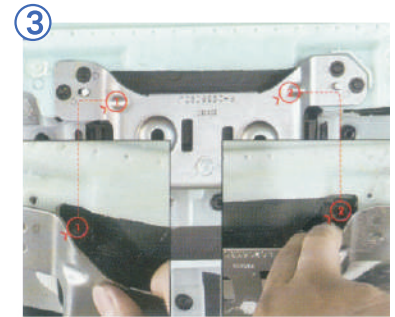
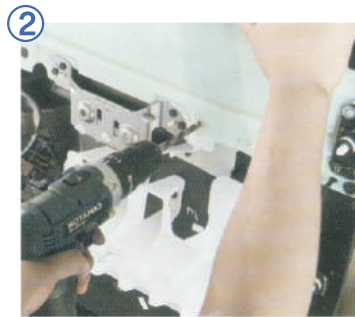
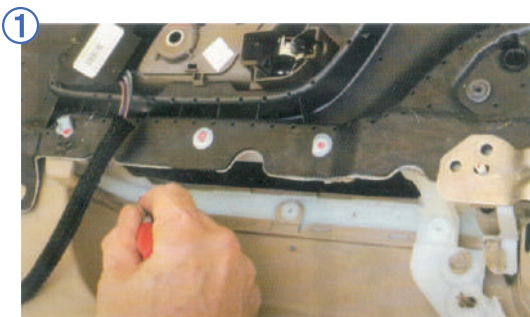
STEP 7

Clean the weld areas



Clean the weld areas

1. Mark the welds numbered 1-8 with a pen for removal
2. Remove the welds: either (1) use a grinder to smooth them off, or (2) drill through the weld centers with a 7/32" drill bit
3. Remove the armrest. If it is difficult to remove, check the two additional fixed points. If they are secured, use a drill to release the armrest

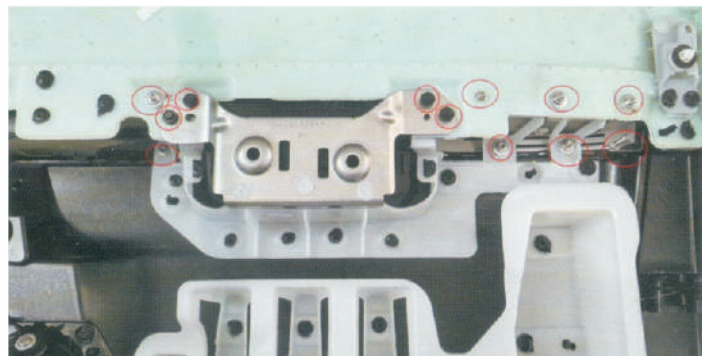


STEP 8

Install the new armrest

Install the new armrest

1. Align the holes and insert the new armrest
2. Place the washer first, then fasten the nut. Tighten the nut to a torque of 10 lbs-in (1 Nm)



STEP 9

Complete the installation

Complete the installation

Reinstall the armrest by following the removal steps in reverse order